

Common Wireless Connection Procedures:

First make sure that your wireless card or adapter is turned ON.

Win XP:

To verify your wireless card is installed properly:

1. Click **Start | Control Panel** or **Start | Settings | Control Panel**
2. Select **System | Hardware tab | Device Manager**
3. Under **Network Adapters** your wireless card should appear.
 - If it has a yellow exclamation mark, then the drivers are not installed or are not working properly. Reinstall the wireless card drivers.
 - If it has a red X, then it may be disabled. Right-click on it and select **Enable**.
 - If the wireless card is not present in the list of network adapters, then it is possible that the drivers are not installed properly. Reinstall the wireless card drivers.

There should be an icon in the lower right corner of your toolbar that looks like a computer monitor with three small yellow “waves” to the right of it. **(Figure 1)**



Figure 1

This icon should not have a red X on it. If it does it means that either you have your wireless device turned off or you do not have a wireless network within range to connect to.

Double click on this icon and a window titled Wireless Network Connection should open. **(Figure 2)**. Click on the “View Wireless Networks” button.

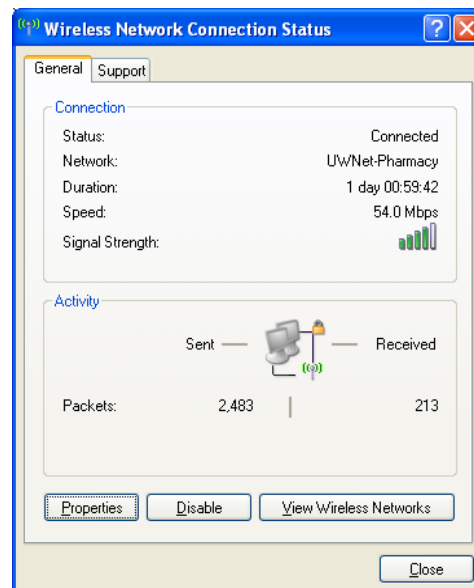


Figure 2

Inside this window (**Figure 3**) there should be a list of wireless networks within range and green bars indicating the strength of the wireless signal. If this does not happen you are probably out of range.

Left click once on the wireless network in the list that you would like to connect to, this should highlight it blue and then click on the connect button in the lower right corner.

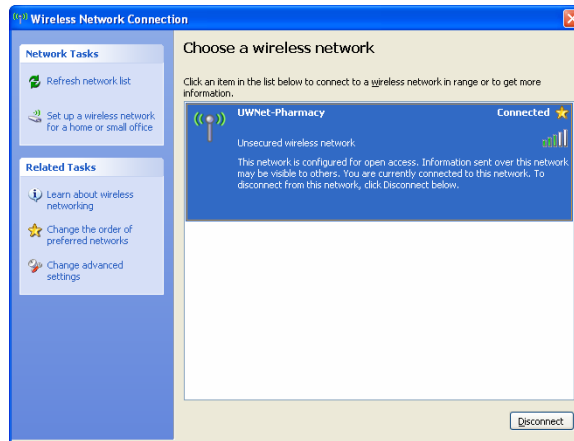


Figure 3

There maybe a password required to logon to some networks. Hotels and Airports will sometimes charge to use wireless this usually requires you to call the front desk or customer service and pay for an amount of time to access the wireless and then they will give you a login and password for the wireless. For example, our UW wireless will display a web page asking for your netid and password before you can use the wireless.

Wireless UWNet (Win XP) - Configuration

This document explains how to configure Windows XP for use with the Wireless UWNet on campus and how to connect to Wireless UWNet access points.

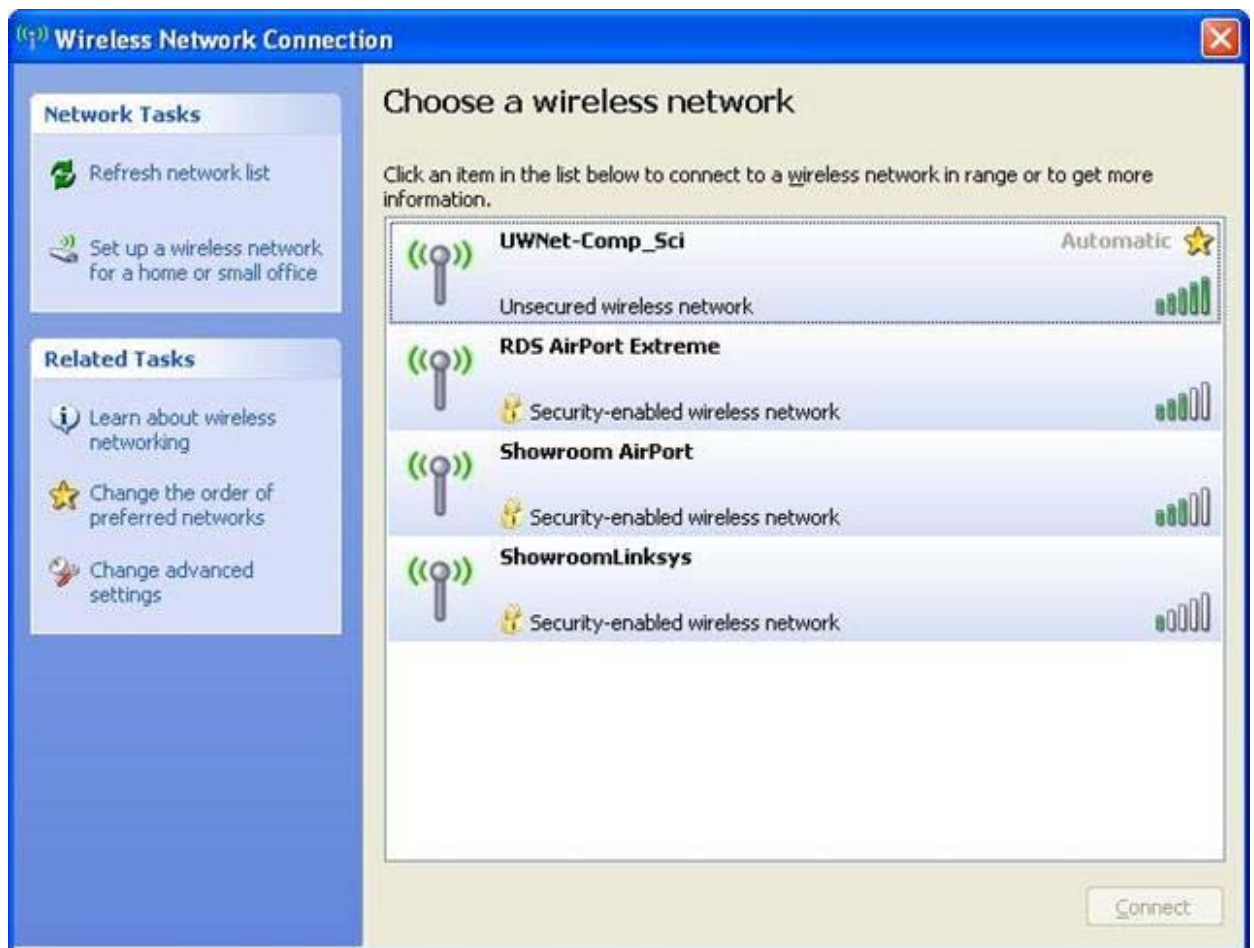
DoIT provides support for Wireless UWNet only through the DoIT Service Desk. Best effort support will be attempted over the phone.

To connect to Wireless UWNet:

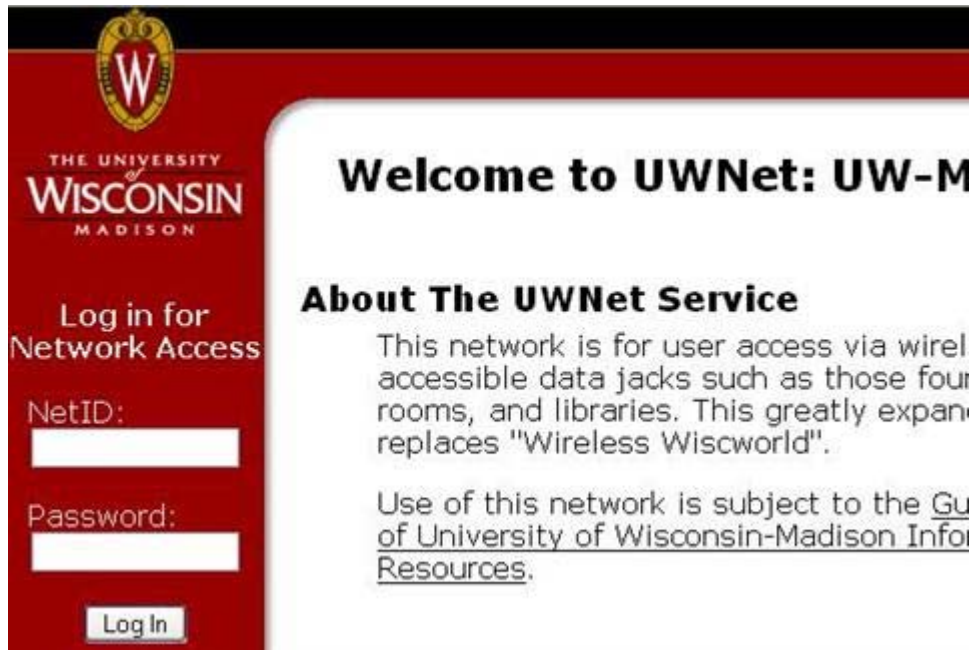
1. Right-click on the wireless connection icon in the system tray and a menu will appear, select **View Available Wireless Networks**.



2. A window will appear that will display the wireless networks available in your area. Select **UWNet-(building name)**, where **(building name)** is the building you are in or are closest to, and click **Connect**. If you do not see any wireless networks listed, make sure your wireless card is active and you are within wireless UWNet access range.



3. Once connected, open a web browser and go to any website. You will be redirected to login with your NetID and password. Once logged in, you can freely use Wireless UWNet.



The screenshot shows the login page for UW-Madison's UWNet. On the left, there is a red sidebar with the University of Wisconsin-Madison logo and the text "Log in for Network Access". Below this are two white input fields for "NetID:" and "Password:", and a "Log In" button. The main content area has a white background with a red header. It features the heading "Welcome to UWNet: UW-M" and a section titled "About The UWNet Service". The text in this section describes the network's purpose and includes a link to the University's Information Resources page.

THE UNIVERSITY OF WISCONSIN MADISON

Log in for Network Access

NetID:

Password:

Log In

Welcome to UWNet: UW-M

About The UWNet Service

This network is for user access via wirel accessible data jacks such as those four rooms, and libraries. This greatly expands and replaces "Wireless Wiscworld".

Use of this network is subject to the [Gu of University of Wisconsin-Madison Info Resources](#).



The screenshot shows the success page after a successful login. The red sidebar on the left now displays "Login Successful". The main content area has a white background with a red header and features the heading "UW-Madison Authenticated Networks". Below this is a section titled "Login Successful" with a message indicating that the user is being redirected back to the university's website in 5 seconds.

THE UNIVERSITY OF WISCONSIN MADISON

Login Successful

UW-Madison Authenticated Networks

Login Successful

Redirecting you back to <http://www.wisc.edu/> in 5 seconds.

4. To check your signal strength, double click on the wireless connection icon in the **Network Connections** control panel or system tray and observe the signal strength.

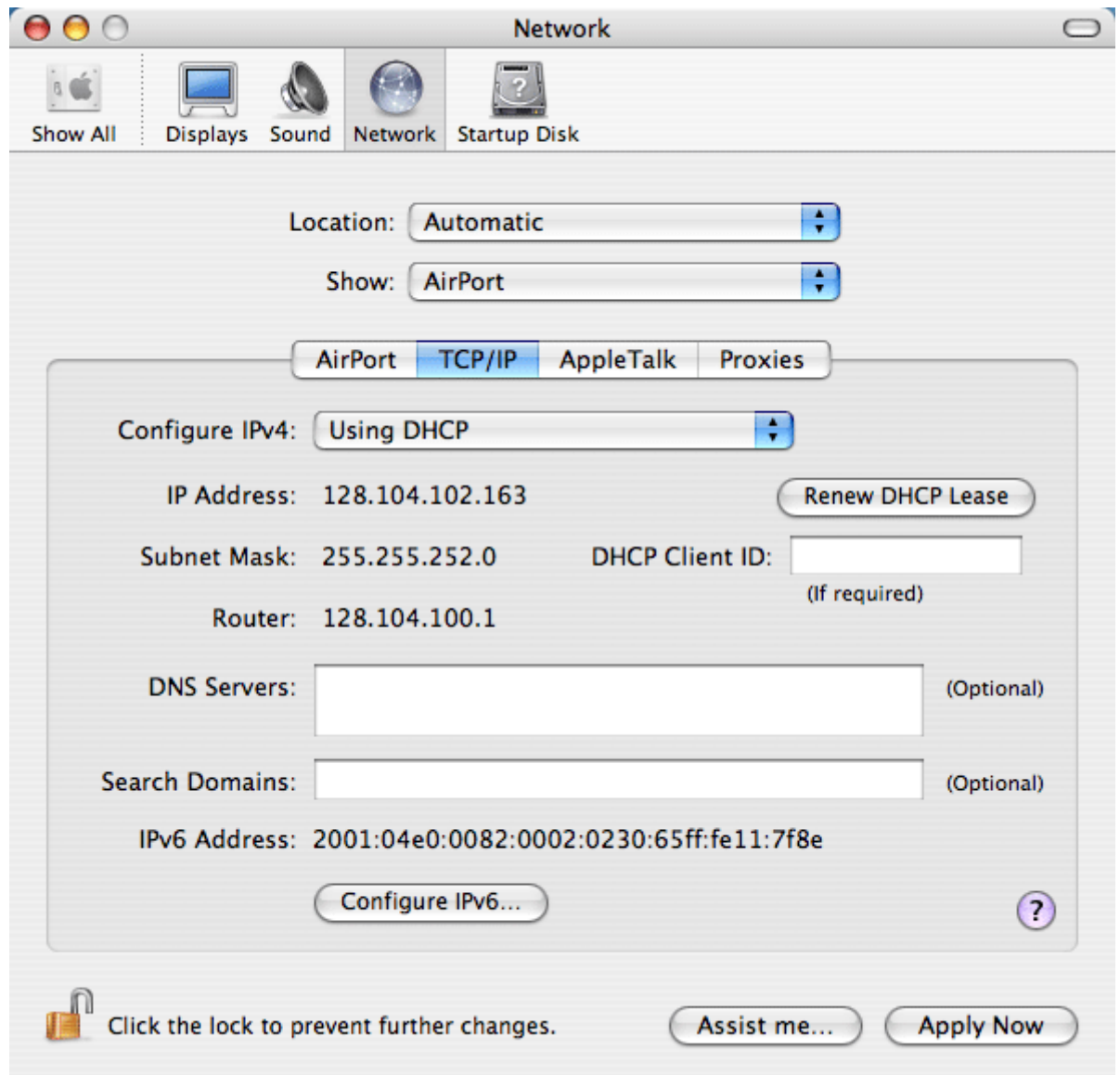
Locations of Wireless network

The campus wireless network is fast, about 20 times faster than a 56-kbps modem connection. You have the portability of a cell telephone, with access to the Web, email, and other services.

You can use a wireless connection these locations ([map](#)):


How to configure Mac OS X for Wireless UWNet.

1. Go to **System Preferences -> Network**
2. Select **Airport** from the **Show:** drop down menu.
3. Click on the **TCP/IP** tab.
4. Select **Using DHCP** under the **Configure** drop down menu.



5. Click **Apply Now**.
6. Close **System Preferences**.
7. Open the **Internet Connect** application found in the **Applications** folder.
8. Select **Airport** from the icons along the top of the window.
9. Select **UWNet-(building name)** from the "Network
10. If "UWNet-(building name)" does not show up in AirPort, the computer is not receiving a signal from a WirelessUWNet hub. Follow these diagnostics to pinpoint the source of the problem.
 - o Check to be sure the card and software are installed correctly.
 - o Move the machine closer to a Wireless UWNet transmitter.

If you are getting a signal, try logging onto the authentication page using your NetID and password by going to any webpage. You will automatically be routed to the login page.



THE UNIVERSITY
WISCONSIN
MADISON

Log in for
Network Access

NetID:

Password:

Welcome to UWNet: UW-M

About The UWNet Service

This network is for user access via wirel accessible data jacks such as those four rooms, and libraries. This greatly expan replaces "Wireless Wiscworld".

Use of this network is subject to the [Gu of University of Wisconsin-Madison Infor Resources](#).



THE UNIVERSITY
WISCONSIN
MADISON

UW-Madison Authenticated Networks

Login Successful

Login Successful
Redirecting you back to <http://www.wisc.edu/> in 5 seconds.

If you are getting a signal and unable to login, contact the Help Desk at 264-HELP.

Each time your computer is booted, you must login into to access the wireless network.